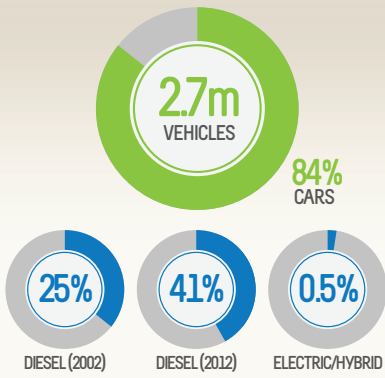
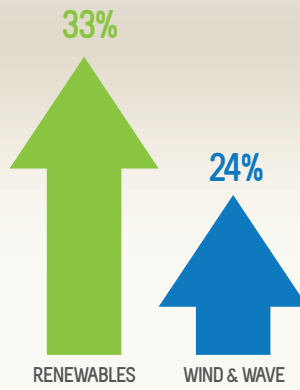


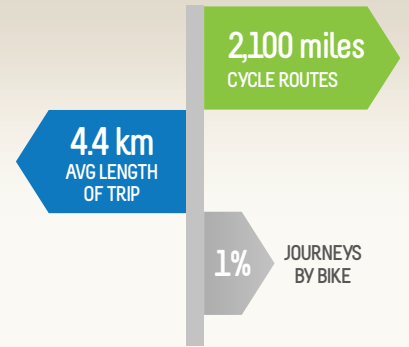
SOURCE



Diesel vehicles emit more particles (which can harm our health)

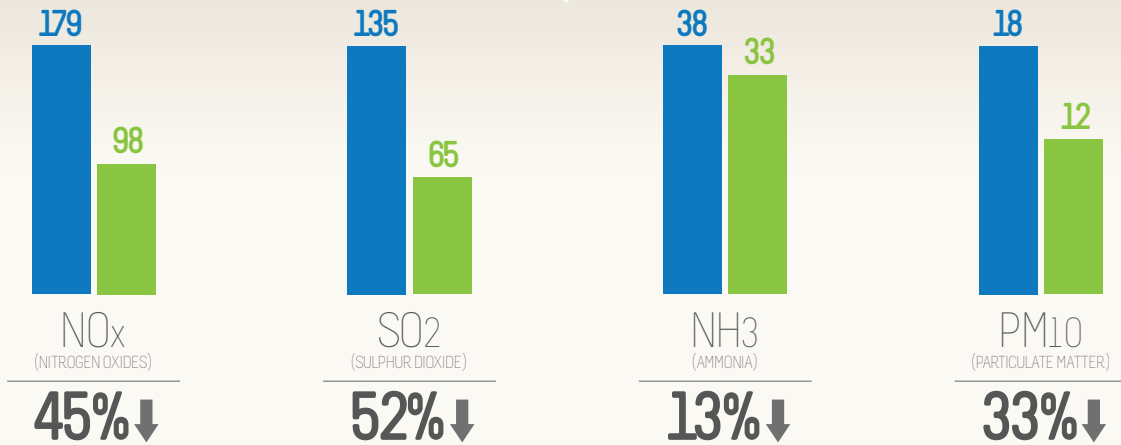


Scotland generated nearly 53,000 GWh of electricity in 2013. Since 2000, wind, wave, tidal and solar have increased year on year



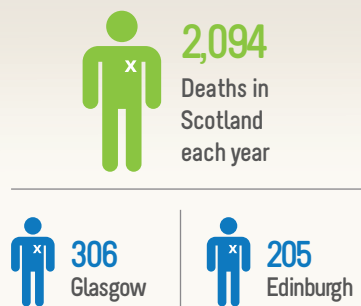
2.5% of commuters travel to work by bike

EMISSIONS

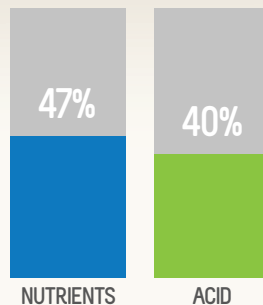


■ Emissions in 2000 (thousand tonnes) ■ Emissions in 2012 (thousand tonnes)

IMPACTS



Tiny particles in the air could be contributing to 2,094 deaths in Scotland a year.



It's estimated that 47% of designated sites in Scotland are at risk from nutrient-nitrogen, and 40% from acidic deposition



Air pollution has damaged the stonework of many buildings in our towns and cities